

# @griplast®

GROW, EVERYWHERE.



- high technology covering films -

# Solex®

**7 layers patented**



# Solex®



Solex® è frutto di oltre 40 anni di esperienza nella ricerca di soluzioni tecnologicamente avanzate per raggiungere le condizioni micro-climatiche ideali all'interno della serra. Tra tutti film disponibili sul mercato, è la copertura per serre che più si avvicina all'obiettivo di ridurre al massimo il rischio ambiente per consentire alle piante di poter vivere in condizioni di luminosità, temperatura e umidità ideali per buona parte dell'anno. Solex® assicura altissima luminosità e straordinario controllo delle temperature minime e massime grazie alle microsferi cave di cristallo che vengono attraversate dalla luce filtrando le radiazioni IR e quindi riducendo sensibilmente l'eccesso di calore all'interno della serra. Solex® è l'unico film nel mercato che consente di controllare efficacemente le temperature massime senza rinunciare ad una altissima luminosità.



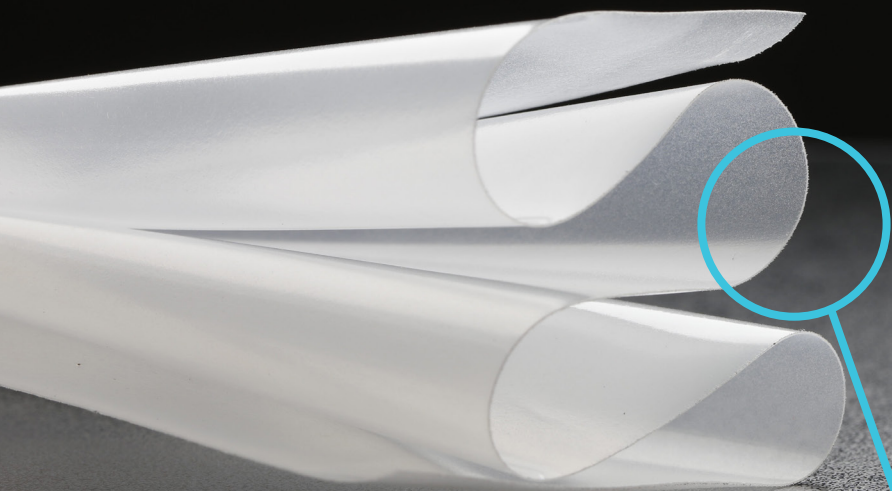
Solex® is the result of more than 40 years of experience in the search for technologically advanced solutions to achieve the ideal micro-climate conditions within the greenhouse. Solex® among all the films available on the market, is the greenhouse cover that is closest to the goal of reducing the environmental risk to the maximum to allow plants to live in conditions of brightness, ideal temperature and humidity for most of the year. Solex® ensures very high brightness and extraordinary control of the temperatures within the greenhouse thanks to the crystal hollow microspheres that are crossed by light filtering IR radiations and thus significantly reducing the excessive heat inside the greenhouse. Solex® is the only film in the market that allows you to effectively control the maximum temperatures still guaranteeing a very high brightness.



Solex® es el resultado de más de 40 años de experiencia en la búsqueda de soluciones tecnológicamente avanzadas para lograr las condiciones microclimáticas ideales dentro del invernadero. Solex®, entre todas las películas disponibles en el mercado, es la cubierta de invernadero más cercana al objetivo de reducir al máximo el riesgo medioambiental para permitir que las plantas vivan en condiciones de brillo, temperatura y humedad ideales durante la mayor parte del año. Solex® garantiza un brillo muy alto y un control extraordinario de las temperaturas mínimas y máximas gracias a las microesferas huecas de cristal que se cruzan por la luz filtrando la radiación IR y reduciendo así significativamente el exceso de calor dentro del invernadero. Solex® es la única película del mercado que permite de controlar eficazmente las temperaturas máximas sin renunciar a un brillo muy alto.



Solex® est le résultat de plus de 40 ans d'expérience dans la recherche de solutions technologiquement avancées pour atteindre les conditions idéales de micro-climat dans la serre. Solex®, parmi tous les films disponibles sur le marché, est la couverture de serre qui est le plus proche de l'objectif de réduire le risque environnemental au maximum pour permettre aux plantes de vivre dans des conditions de luminosité, de température et d'humidité idéales pour la plupart de l'année. Solex® assure une luminosité très élevée et un contrôle extraordinaire des températures minimales et maximales grâce aux microsphères creuses en cristal qui sont traversées par la lumière en filtrant le rayonnement IR et réduisant ainsi considérablement l'excès de chaleur à l'intérieur de la serre. Solex® est le seul film sur le marché qui vous permet de contrôler efficacement les températures maximales sans renoncer à une luminosité très élevée.



**Solex®**  
could be provided with Antigoccia treatment  
and produced in the following versions:

ANNUAL EN 13206

**B**

LONG LIFE EN 13206

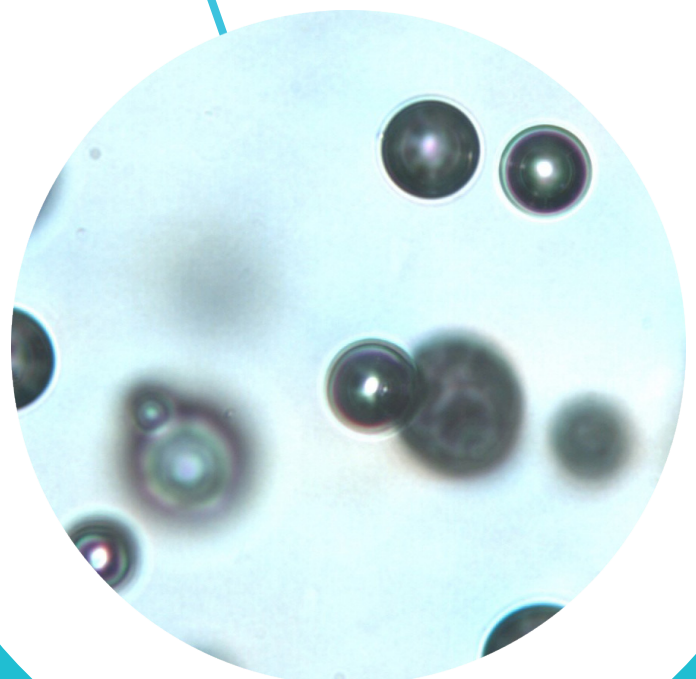
**D**

LONG LIFE PLUS EN 13206

**E**

LONG LIFE STAR PLUS EN 13206

**F**













# Solex®

Thickness  $\mu\text{m}$  200 - Width mt. various

	PROPERTY	UNIT	VALUE	TEST METHOD
DIMENSIONAL PROPERTIES	Nominal thickness tolerance:			
	Average thickness	$\mu\text{m}$	$\pm 5\%$	ISO 4591
	Point to point thickness	$\mu\text{m}$	$\pm 15\%$	ISO 4593
	Width tolerance	mm	0% +2%	ISO 4592
MECHANICAL PROPERTIES	Tensile strenght at break MD + TD	N/mm <sup>2</sup>	$\geq 21$	EN ISO 527-3
	Elongation at break MD + TD	%	$\geq 560$	EN ISO 527-3
	Tear resistance (Elmendorf)	N	$\geq 18$	ISO 6383-2
	Dart drop test - Zone flat	gr	$\geq 800$	ISO 7765-1 A
	Zone fold	gr	$\geq 700$	ISO 7765-1 A
THERMAL AND OPTICAL PROPERTIES	Total visible light emission	%	$\geq 88$	EN 2155-5
	Diffused light	%	$\leq 30$	EN 2155-5
	IR 7,5/12,5 micron (greenhouse effect)	%	$\geq 88$	EN 13206
OTHER PROPERTIES	Elongation at break after exposition	%	$\geq 50\%$	ISO 4892-2
DURATION	Class of film		E	EN 13206
	Duration (hours)	hours	$\geq 8500$	ISO 4892-2
	Expected life-time	months	48	area 70-100 kLy
		months	45	area 100-130 kLy
		months	36	area 130-160 kLy

**Attention** The data are referred to the film tested before the use. The lifetime expected can be negatively affected by an incorrect cladding operation and/or use of pesticides containing halogen -based compounds and/or heavy metals (as sulphur, chlorine, bromine, copper, zinc, iron, etc). In this respect we advise you to carefully read our instructions for a correct use of LDPE-EVA-LLDPE-POLIAMMIDE films.

**Solex<sup>®</sup>**



**Agriplast S.p.a.**  
Via Filippo Bonetta 35  
97019 Vittoria (RG)  
Tel +39 0932 99 72 11  
P.IVA: 00140850884

[www.agriplast.com](http://www.agriplast.com)

